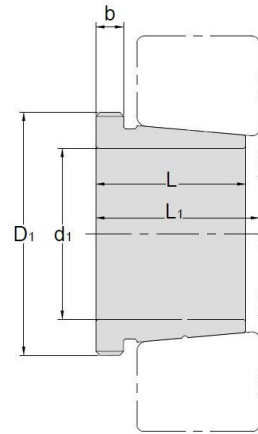


Withdrawal Sleeves



AH 2

TAPER 1:12

Withdrawal Sleeves NO.	d1 mm	L mm	L ₁ ¹⁾ mm	b mm	Thread ²⁾ D1 mm	Appropriate Withdrawal Nut No.	Weight kg
AH208	35	25	27	6	M45*1.5	AN09	0.081
AH209	40	26	29	6	M50*1.5	AN10	0.095
AH210	45	28	31	7	M55*2	AN11	0.114
AH211	50	29	32	7	M60*2	AN12	0.132
AH212	55	32	35	8	M65*2	AN13	0.161
AH213	60	32.5	36	8	M75*2	AN15	0.213
AH214	65	33.5	37	8	M80*2	AN16	0.24
AH215	70	34.5	38	8	M85*2	AN17	0.259
AH216	75	35.5	39	8	M90*2	AN18	0.284
AH217	80	38.5	42	9	M95*2	AN19	0.314
AH218	85	40	44	9	M100*2	AN20	0.351
AH219	90	43	47	10	M105*2	AN21	0.403
AHX220	95	45	49	10	M110*2	AN22	0.481
AHX222	105	50	54	11	M120*2	AN24	0.547

① Dimension L1 decreases as the withdrawal sleeve is driven in during mounting

② M means metric thread.