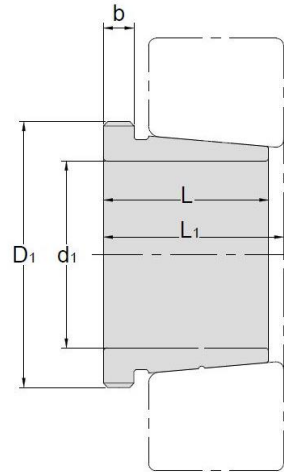


Withdrawal Sleeves



AH 22

TAPER 1:12

Withdrawal Sleeves NO.	d1 mm	L mm	L ₁ ¹⁾ mm	b mm	Thread ²⁾ D1 mm	Appropriate Withdrawal Nut No.	Weight kg
AH2236	170	105	110	17	M200*3	AN40	3.73
AH2238	180	112	117	18	Tr210*4	HN42	4.25
AH2240	190	118	123	19	Tr220*4	HN44	4.68
AH2244	200	130	136	20	Tr240*4	HN48	9.1
AH2248	220	144	150	21	Tr260*4	HN52	11.1
AH2252	240	155	161	23	Tr290*4	HN58	14
AH2256	260	155	163	24	Tr310*5	HN62	15.2
AH2260	280	170	178	26	Tr330*5	HN66	18.1
AH2264	300	180	190	27	Tr350*5	HN70	20.2

⊙ Dimension L1 decreases as the withdrawal sleeve is driven in during mounting

⊙ M means metric thread. Tr means 30°, trapezoid thread and the digits are outside diameter of thread and pitch.