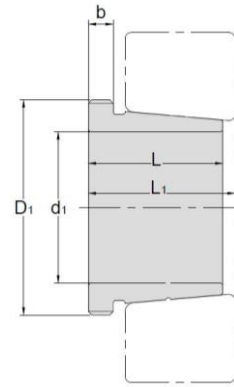


## Withdrawal Sleeves



TAPER 1:12

### AH 23

Withdrawal Sleeves NO.	d1 mm	L mm	L <sub>1</sub> <sup>1)</sup> mm	b mm	Thread D1 mm	Appropriate Withdrawal Nut No.	Weight kg
AH2308	35	40	43	7	M45*1.5	AN09	0.128
AH2309	40	44	47	7	M50*1.5	AN10	0.164
AHX2310	45	50	53	9	M55*2	AN11	0.209
AHX2311	50	54	57	10	M60*2	AN12	0.253
AHX2312	55	58	61	11	M65*2	AN13	0.297
AH2313	60	61	64	12	M75*2	AN15	0.395
AHX2314	65	64	68	12	M80*2	AN16	0.466
AHX2315	70	68	72	12	M85*2	AN17	0.534
AHX2316	75	71	75	12	M90*2	AN18	0.597
AHX2317	80	74	78	13	M95*2	AN19	0.67
AHX2318	85	79	83	14	M100*2	AN20	0.779
AHX2319	90	85	89	16	M105*2	AN21	0.886
AHX2320	95	90	94	16	M110*2	AN22	0.998
AHX2322	105	98	102	16	M125*2	AN25	1.35
AHX2324	115	105	109	17	M135*2	AN27	1.6
AHX2326	125	115	119	19	M145*2	AN29	1.97
AHX2328	135	125	130	20	M155*3	AN31	2.33
AHX2330	145	135	140	24	M165*3	AN33	2.82
AH2332	150	140	146	24	M180*3	AN36	4.72
AH2334	160	146	152	24	M190*3	AN38	5.25
AH2336	170	154	160	26	M200*3	AN40	5.83
AH2338	180	160	167	26	Tr210*4	HN42	6.63
AH2340	190	170	177	30	Tr220*4	HN44	7.54
AH2344	200	181	189	30	Tr240*4	HN48	13.5
AH2348	220	189	197	30	Tr260*4	HN52	15.5
AH2352	240	205	213	30	Tr290*4	HN58	19.6
AH2356	260	212	220	30	Tr310*5	HN62	21.6

① Dimension L1 decreases as the withdrawal sleeve is driven in during mounting

② M means metric thread. Tr means 30°, trapezoid thread and the digits are outside diameter of thread and pitch.