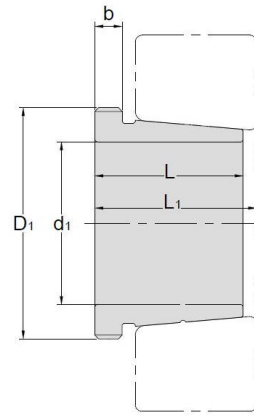


Withdrawal Sleeves



AH 240

TAPER 1:12

Withdrawal Sleeves NO.	d1 mm	L mm	L ₁ ¹⁾ mm	b mm	Thread D1 mm	Appropriate Withdrawal Nut No.	Weight kg
AH24024	115	73	82	13	M125*2	AN25	0.65
AH24026	125	83	93	14	M135*2	AN27	0.84
AH24028	135	83	93	14	M145*2	AN29	0.91
AH24030	145	90	101	15	M155*3	AN31	1.04
AH24032	150	95	106	15	M170*3	AN34	2.33
AH24034	160	106	117	16	M180*3	AN36	2.8
AH24036	170	116	127	16	M190*3	AN38	3.1
AH24038	180	118	131	18	M200*3	AN40	3.5
AH24040	190	127	140	18	Tr210*4	HN42	3.93
AH24044	200	138	152	20	Tr230*4	HN46	8.25
AH24048	220	138	153	20	Tr250*4	HN50	9
AH24052	240	162	178	22	Tr270*4	HN54	11.8
AH24056	260	162	179	22	Tr290*4	HN58	12.8
AH24060	280	184	202	24	Tr310*5	HN62	15.5
AH24064	300	184	202	24	Tr330*5	HN66	16.6
AH24068	320	206	225	26	Tr360*5	HNL72	21.7
AH24072	340	206	226	26	Tr380*5	HNL76	22.7
AH24076	360	208	228	28	Tr400*5	HNL80	23.7
AH24080	380	228	248	28	Tr420*5	HNL84	27.1
AH24084	400	230	252	30	Tr440*5	HNL88	29
AH24088	420	242	264	30	Tr460*5	HNL92	31.9
AH24092	440	250	273	32	Tr480*5	HNL96	34.7
AH24096	460	250	273	32	Tr500*5	HNL100	36.6
AH240/500	480	253	276	35	Tr520*6	HNL104	39.5

① Dimension L1 decreases as the withdrawal sleeve is driven in during mounting

② M means metric thread. Tr means 30°, trapezoid thread and the digits are outside diameter of thread and pitch.