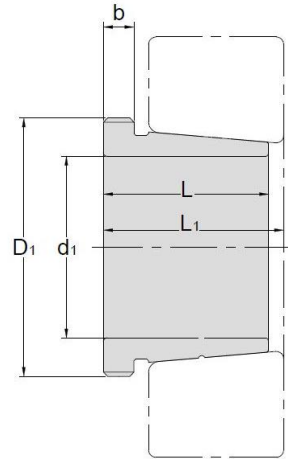


Withdrawal Sleeves



AH 241

TAPER 1:12

Withdrawal Sleeves NO.	d1 mm	L mm	L ₁ ¹⁾ mm	b mm	Thread ²⁾ D1 mm	Appropriate Withdrawal Nut No.	Weight kg
AH24122	105	82	91	13	M115*2	AN23	0.73
AH24124	115	93	102	13	M130*2	AN26	1
AH24126	125	94	104	14	M140*2	AN28	1.11
AH24128	135	99	109	14	M150*2	AN30	1.25
AH24130	145	115	126	15	M160*3	AN32	1.56
AH24132	150	124	135	15	M170*3	AN34	3
AH24134	160	125	136	16	M180*3	AN36	3.21
AH24136	170	134	145	16	M190*3	AN38	3.68
AH24138	180	146	159	18	M200*3	AN40	4.28
AH24140	190	158	171	18	Tr210*4	HN42	5.1
AH24144	200	170	184	20	Tr230*4	HN46	10.2
AH24148	220	180	195	20	Tr260*4	HN52	12.5
AH24152	240	202	218	22	Tr280*4	HN56	15.4
AH24156	260	202	219	22	Tr300*4	HN60	16.3
AH24160	280	224	242	24	Tr320*5	HN64	19.5
AH24164	300	242	260	24	Tr340*5	HN68	21.4
AH24168	320	269	288	26	Tr360*5	HN72	27.1
AH24172	340	269	289	26	Tr380*5	HN76	29.6
AH24176	360	271	291	28	Tr400*5	HN80	31.3
AH24180	380	278	298	28	Tr420*5	HN84	34.4
AH24184	400	310	332	30	Tr440*5	HN88	40.3
AH24188	420	310	332	30	Tr460*5	HN92	42.3
AH24192	440	332	355	32	Tr480*5	HN96	47.6
AH24196	460	343	368	35	Tr500*5	HN100	52.7
AH241/500	480	362	387	37	Tr520*6	HN104	58.8

© Dimension L1 decreases as the withdrawal sleeve is driven in during mounting

© M means metric thread. Tr means 30°, trapezoid thread and the digits are outside diameter of thread and pitch.