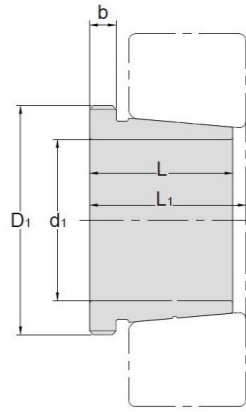


Withdrawal Sleeves



AH 3

TAPER 1:12

Withdrawal Sleeves NO.	d1 mm	L mm	L ₁ ¹⁾ mm	b mm	Thread ²⁾ D1 mm	Appropriate Withdrawal Nut No.	Weight kg
AH308	35	29	32	6	M45*1.5	AN09	0.09
AH309	40	31	34	6	M50*1.5	AN10	0.109
AHX310	45	35	38	7	M55*2	AN11	0.137
AHX311	50	37	40	7	M60*2	AN12	0.161
AHX312	55	40	43	8	M65*2	AN13	0.189
AH313	60	42	45	8	M75*2	AN15	0.253
AH314	65	43	47	8	M80*2	AN16	0.28
AH315	70	45	49	8	M85*2	AN17	0.313
AH316	75	48	52	8	M90*2	AN18	0.365
AHX317	80	52	56	9	M95*2	AN19	0.429
AHX318	85	53	57	9	M100*2	AN20	0.461
AHX319	90	57	61	10	M105*2	AN21	0.532
AHX320	95	59	63	10	M110*2	AN22	0.582
AHX322	105	63	67	12	M120*2	AN24	0.663

⊙ Dimension L1 decreases as the withdrawal sleeve is driven in during mounting

⊙ M means metric thread.