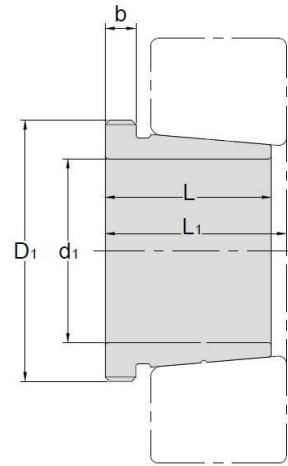


Withdrawal Sleeves



AH 30

TAPER 1:12

Withdrawal Sleeves NO.	d1 mm	L mm	L ₁ ¹⁾ mm	b mm	Thread ²⁾ D1 mm	Appropriate Withdrawal Nut No.	Weight kg
AHX3024	115	60	64	13	M130*2	AN26	0.75
AHX3026	125	67	71	14	M140*2	AN28	0.93
AHX3028	135	68	73	14	M150*2	AN30	1.01
AHX3030	145	72	77	15	M160*3	AN32	1.15
AH3032	150	77	82	16	M170*3	AN34	2.06
AH3034	160	85	90	17	M180*3	AN36	2.43
AH3036	170	92	98	17	M190*3	AN38	2.81
AH3038	180	96	102	18	Tr205*4	HNL41	3.32
AH3040	190	102	108	19	Tr215*4	HNL43	3.8
AH3044	200	111	117	20	Tr235*4	HNL47	7.4
AH3048	220	116	123	21	Tr260*4	HNL52	8.75
AH3052	240	128	135	23	Tr280*4	HNL56	10.7
AH3056	260	131	139	24	Tr300*4	HNL60	12
AH3060	280	145	153	26	Tr320*5	HNL64	14.4
AH3064	300	149	157	27	Tr345*5	HNL69	16
AH3068	320	162	171	28	Tr365*5	HNL73	19.5
AH3072	340	167	176	30	Tr385*5	HNL77	21
AH3076	360	170	180	31	Tr410*5	HNL82	23.2
AH3080	380	183	193	33	Tr430*5	HNL86	27.3
AH3084	400	186	196	34	Tr450*5	HNL90	29
AHX3088	420	194	205	35	Tr470*5	HNL94	32
AHX3092	440	202	213	37	Tr490*5	HNL98	35.2
AHX3096	460	205	217	38	Tr520*6	HNL104	39.2
AHX30/500	480	209	221	40	Tr540*6	HNL108	42.5

© Dimension L1 decreases as the withdrawal sleeve is driven in during mounting

© M means metric thread. Tr means 30°, trapezoid thread and the digits are outside diameter of thread and pitch.