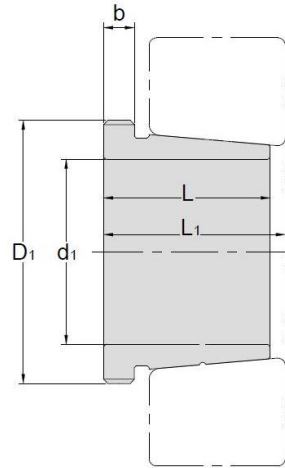


## Withdrawal Sleeves



### AH 31

TAPER 1:12

Withdrawal Sleeves NO.	d1 mm	L mm	L <sub>1</sub> <sup>1)</sup> mm	b mm	Thread <sup>2)</sup> D1 mm	Appropriate Withdrawal Nut No.	Weight kg
AHX3120	95	64	68	11	M110*2	AN22	0.65
AHX3122	105	68	72	11	M120*2	AN24	0.76
AHX3124	115	75	79	12	M130*2	AN26	0.95
AHX3126	125	78	82	12	M140*2	AN28	1.08
AHX3128	135	83	88	14	M150*2	AN30	1.28
AHX3130	145	96	101	15	M165*3	AN33	1.79
AH3132	150	103	108	16	M180*3	AN36	3.21
AH3134	160	104	109	16	M190*3	AN38	3.4
AH3136	170	116	122	19	M200*3	AN40	4.22
AH3138	180	125	131	20	Tr210*4	HN42	4.89
AH3140	190	134	140	21	Tr220*4	HN44	5.49
AH3144	200	145	151	23	Tr240*4	HN48	10.4
AH3148	220	154	161	25	Tr260*4	HN52	12
AH3152	240	172	179	26	Tr290*4	HN58	16.2
AH3156	260	175	183	28	Tr310*5	HN62	17.5
AH3160	280	192	200	30	Tr330*5	HN66	20.8
AH3164	300	209	217	31	Tr350*5	HN70	24.5
AH3168	320	225	234	33	Tr370*5	HN74	29
AH3172	340	229	238	35	Tr400*5	HN80	33
AH3176	360	232	242	36	Tr420*5	HN84	35.7
AH3180	380	240	250	38	Tr440*5	HN88	39.5
AH3184	400	266	276	40	Tr460*5	HN92	46.5
AHX3188	420	270	281	42	Tr480*5	HN96	49.8
AHX3192	440	285	296	43	Tr510*6	HN102	57.9
AHX3196	460	295	307	45	Tr530*6	HN106	63.1
AHX31/500	480	313	325	47	Tr550*6	HN110	70.9

© Dimension L1 decreases as the withdrawal sleeve is driven in during mounting

© M means metric thread. Tr means 30°, trapezoid thread and the digits are outside diameter of thread and pitch.