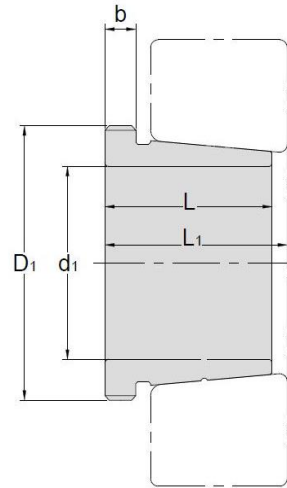


Withdrawal Sleeves



AH 32

TAPER 1:12

Withdrawal Sleeves NO.	d1 mm	L mm	L ₁ ¹⁾ mm	b mm	Thread ²⁾ D1 mm	Appropriate Withdrawal Nut No.	Weight kg
AHX3218	85	63	67	10	M100*2	AN20	0.576
AHX3220	95	73	77	11	M110*2	AN22	0.767
AHX3222	105	82	86	11	M125*2	AN25	1.04
AHX3224	115	90	94	13	M135*2	AN27	1.3
AHX3226	125	98	102	15	M145*2	AN29	1.58
AHX3228	135	104	109	15	M155*3	AN31	1.84
AHX3230	145	114	119	17	M165*3	AN33	2.22
AH3232	150	124	130	20	M180*3	AN36	4.08
AH3234	160	134	140	24	M190*3	AN38	4.8
AH3236	170	140	146	24	M200*3	AN40	5.32
AH3238	180	145	152	25	Tr210*4	HN42	5.9
AH3240	190	153	160	25	Tr220*4	HN44	6.68
AH3260	280	228	236	34	Tr330*5	HN66	26
AH3264	300	246	254	36	Tr350*5	HN70	30.6
AH3268	320	264	273	38	Tr370*5	HN74	35.8
AH3272	340	274	283	40	Tr400*5	HN80	41.6
AH3276	360	284	294	42	Tr420*5	HN84	46.3
AH3280	380	302	312	44	Tr440*5	HN88	52.5
AH3284	400	321	331	46	Tr460*5	HN92	59.7
AHX3288	420	330	341	48	Tr480*5	HN96	64.8
AHX3292	440	349	360	50	Tr510*6	HN102	75.2
AHX3296	460	364	376	52	Tr530*6	HN106	83.1
AHX32/500	480	393	405	54	Tr550*6	HN110	94.7

© Dimension L1 decreases as the withdrawal sleeve is driven in during mounting

© M means metric thread. Tr means 30°, trapezoid thread and the digits are outside diameter of thread and pitch.