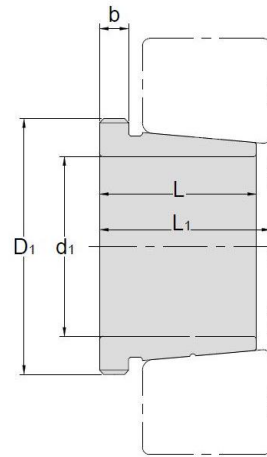


Withdrawal Sleeves



AH 39

TAPER 1:12

Withdrawal Sleeves NO.	d1 mm	L mm	L ₁ ¹⁾ mm	b mm	Thread ²⁾ D1 mm	Appropriate Withdrawal Nut No.	Weight kg
AH3936	170	66	71	13	M190*3	AN38	1.91
AH3938	180	66	71	13	M200*3	AN40	2.02
AH3940	190	77	83	16	Tr210*4	HN42	2.62
AH3944	200	77	83	16	Tr230*4	HN46	4.83
AH3948	220	77	83	16	Tr250*4	HN50	5.29
AH3952	240	94	100	18	Tr270*4	HN54	7.06
AH3956	260	94	100	18	Tr290*4	HN58	7.7
AH3960	280	112	119	21	Tr310*5	HN62	10.1
AH3964	300	112	119	21	Tr330*5	HN66	10.8
AH3968	320	112	119	21	Tr360*5	HNL72	12.4
AH3972	340	112	119	21	Tr380*5	HNL76	13.1
AH3976	360	130	138	22	Tr400*5	HNL80	15.9
AH3980	380	130	138	22	Tr420*5	HNL84	17.2
AH3984	400	130	138	22	Tr440*5	HNL88	18.1
AH3988	420	145	153	25	Tr460*5	HNL92	21.5
AH3992	440	145	153	25	Tr480*5	HNL96	22.5
AH3996	460	158	167	28	Tr500*5	HNL100	26
AH39/500	480	162	172	32	Tr520*6	HNL104	27.7

⊙ Dimension L₁ decreases as the withdrawal sleeve is driven in during mounting

⊙ M means metric thread. Tr means 30°, trapezoid thread and the digits are outside diameter of thread and pitch.