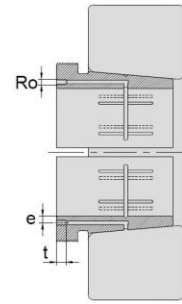
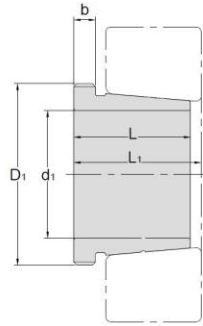


Hydraulic Withdrawal Sleeves



AOH 22

TAPER 1:12

Hydraulic Withdrawal Sleeves NO.	d1 mm	L mm	L ₁ ¹⁾ mm	b mm	Ro	e mm	t mm	Thread ²⁾ D1 mm	Appropriate Withdrawal Nut No.	Weight kg
AOH2236	170	105	110	17	M6	4.5	8	M200*3	AN40	3.73
AOH2238	180	112	117	18	M6	4.5	8	Tr210*4	HN42	4.25
AOH2240	190	118	123	19	M6	4.5	8	Tr220*4	HN44	4.68
AOH2244	200	130	136	20	G1/8	8.5	12	Tr240*4	HN48	9.1
AOH2248	220	144	150	21	G1/8	8.5	12	Tr260*4	HN52	11.1
AOH2252	240	155	161	23	G1/8	8.5	12	Tr290*4	HN58	14
AOH2256	260	155	163	24	G1/8	8.5	12	Tr310*4	HN62	15.2
AOH2260	280	170	178	26	G1/8	8.5	12	Tr330*4	HN66	18.1
AOH2264	300	180	190	27	G1/8	8.5	12	Tr350*4	HN70	20.2

© Dimension L1 decreases as the Hydraulic withdrawal sleeve is driven in during mounting

© M means metric thread. Tr means 30°, trapezoid thread and the digits are outside diameter of thread and pitch.