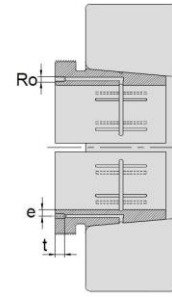
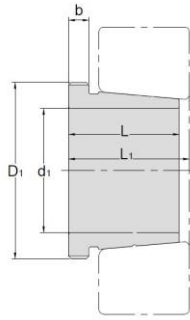


Hydraulic Withdrawal Sleeves



AOH 23

TAPER 1:12

| Hydraulic Withdrawal Sleeves NO. | d1 mm | L mm | L ₁ ¹⁾ mm | b mm | Ro | e mm | t mm | Thread ²⁾ D1 mm | Appropriate Withdrawal Nut No. | Weight kg |
|----------------------------------|----------|---------|------------------------------------|---------|------|---------|---------|----------------------------------|--------------------------------|--------------|
| AOH2332 | 150 | 140 | 146 | 24 | M6 | 4.5 | 8 | M180*3 | AN36 | 4.72 |
| AOH2334 | 160 | 146 | 152 | 24 | M6 | 4.5 | 8 | M190*3 | AN38 | 5.25 |
| AOH2336 | 170 | 154 | 160 | 26 | M6 | 4.5 | 8 | M200*3 | AN40 | 5.83 |
| AOH2338 | 180 | 160 | 167 | 26 | M6 | 4.5 | 8 | Tr210*4 | HN42 | 6.63 |
| AOH2340 | 190 | 170 | 177 | 30 | M6 | 4.5 | 8 | Tr220*4 | HN44 | 7.54 |
| AOH2344 | 200 | 181 | 189 | 30 | G1/8 | 8.5 | 12 | Tr240*4 | HN48 | 13.5 |
| AOH2348 | 220 | 189 | 197 | 30 | G1/8 | 8.5 | 12 | Tr260*4 | HN52 | 15.5 |
| AOH2352 | 240 | 205 | 213 | 30 | G1/8 | 8.5 | 12 | Tr290*4 | HN58 | 19.6 |
| AOH2356 | 260 | 212 | 220 | 30 | G1/8 | 8.5 | 12 | Tr310*5 | HN62 | 21.6 |

© Dimension L1 decreases as the Hydraulic withdrawal sleeve is driven in during mounting

© M means metric thread. Tr means 30°, trapezoid thread and the digits are outside diameter of thread and pitch.