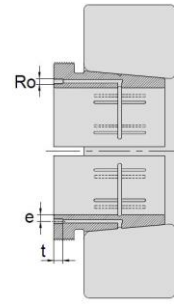
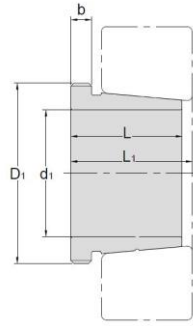


## Hydraulic Withdrawal Sleeves



### AOH 240

TAPER 1:12

Hydraulic Withdrawal Sleeves NO.	d1 mm	L mm	L <sub>1</sub> <sup>1)</sup> mm	b mm	Ro	e mm	t mm	Thread <sup>2)</sup> D1 mm	Appropriate Withdrawal Nut No.	Weight kg
AOH24044	200	138	152	20	M6	8	8	Tr230*4	HN46	8.25
AOH24048	220	138	153	20	M6	8	8	Tr250*4	HN50	9
AOH24052	240	162	178	22	M6	8	8	Tr270*4	HN54	11.8
AOH24056	260	162	179	22	M6	8	8	Tr290*4	HN58	12.8
AOH24060	280	184	202	24	M6	8	8	Tr310*5	HN62	15.5
AOH24064	300	184	202	24	M6	8	8	Tr330*5	HN66	16.6
AOH24068	320	206	225	26	G1/8	8.5	12	Tr360*5	HNL72	21.7
AOH24072	340	206	226	26	G1/8	8.5	12	Tr380*5	HNL76	22.7
AOH24076	360	208	228	28	G1/8	8.5	12	Tr400*5	HNL80	23.7
AOH24080	380	228	248	28	G1/8	8.5	12	Tr420*5	HNL84	27.1
AOH24084	400	230	252	30	G1/8	8.5	12	Tr440*5	HNL88	29
AOH24088	420	242	264	30	G1/8	8.5	12	Tr460*5	HNL92	31.9
AOH24092	440	250	273	32	G1/8	8.5	12	Tr480*5	HNL96	34.7
AOH24096	460	250	273	32	G1/8	8.5	12	Tr500*5	HNL100	36.6
AOH240/500	480	253	276	35	G1/8	8.5	12	Tr530*6	HNL104	39.5

© Dimension L1 decreases as the Hydraulic withdrawal sleeve is driven in during mounting

© M means metric thread. Tr means 30°, trapezoid thread and the digits are outside diameter of thread and pitch.