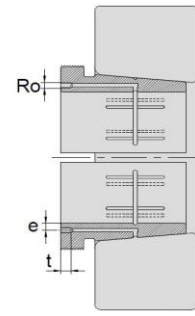
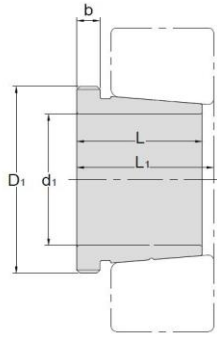


Hydraulic Withdrawal Sleeves



TAPER 1:12

AOH 241

Hydraulic Withdrawal Sleeves NO.	d1 mm	L mm	L ₁ ¹⁾ mm	b mm	Ro	e mm	t mm	Thread ²⁾ D1 mm	Appropriate Withdrawal Nut No.	Weight kg
AOH24144	200	170	184	20	M6	8	8	Tr230*4	HN46	10.2
AOH24148	220	180	195	20	G1/8	8.5	12	Tr260*4	HN52	12.5
AOH24152	240	202	218	22	G1/8	8.5	12	Tr280*4	HN56	15.4
AOH24156	260	202	219	22	G1/8	8.5	12	Tr300*4	HN60	16.3
AOH24160	280	224	242	24	G1/8	8.5	12	Tr320*5	HN64	19.5
AOH24164	300	242	260	24	G1/8	8.5	12	Tr340*5	HN68	21.4
AOH24168	320	269	288	26	G1/8	8.5	12	Tr360*5	HN72	27.1
AOH24172	340	269	289	26	G1/8	8.5	12	Tr380*5	HN76	29.6
AOH24176	360	271	291	28	G1/8	8.5	12	Tr400*5	HN80	31.3
AOH24180	380	278	298	28	G1/8	8.5	12	Tr420*5	HN84	34.4
AOH24184	400	310	332	30	G1/8	8.5	12	Tr440*5	HN88	40.3
AOH24188	420	310	332	30	G1/8	8.5	12	Tr460*5	HN92	42.3
AOH24192	440	332	355	32	G1/8	8.5	12	Tr480*5	HN96	47.6
AOH24196	460	343	368	35	G1/8	8.5	12	Tr500*5	HN100	52.7
AOH241/500	480	362	387	37	G1/8	8.5	12	Tr530*6	HN104	58.8

© Dimension L1 decreases as the Hydraulic withdrawal sleeve is driven in during mounting

© M means metric thread. Tr means 30°, trapezoid thread and the digits are outside diameter of thread and pitch.