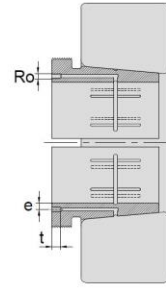
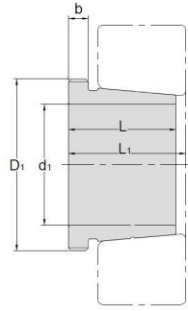


Hydraulic Withdrawal Sleeves



TAPER 1:12

AOH 30

Hydraulic Withdrawal Sleeves NO.	d1 mm	L mm	L ₁ ¹⁾ mm	b mm	Ro	e mm	t mm	Thread ²⁾ D1 mm	Appropriate Withdrawal Nut No.	Weight kg
AOH3032	150	77	82	16	M6	4.2	8	M170*3	AN34	2.06
AOH3034	160	85	90	17	M6	4.2	8	M180*3	AN36	2.43
AOH3036	170	92	98	17	M6	4.2	8	M190*3	AN38	2.81
AOH3038	180	96	102	18	M6	4.2	8	Tr205*4	HNL41	3.32
AOH3040	190	102	108	19	M6	4.2	8	Tr215*4	HNL43	3.8
AOH3044	200	111	117	20	G1/8	8.5	12	Tr235*4	HNL47	7.4
AOH3048	220	116	123	21	G1/8	8.5	12	Tr260*4	HNL52	8.75
AOH3052	240	128	135	23	G1/8	8.5	12	Tr280*4	HNL56	10.7
AOH3056	260	131	139	24	G1/8	8.5	12	Tr300*4	HNL60	12
AOH3060	280	145	153	26	G1/8	8.5	12	Tr320*5	HNL64	14.4
AOH3064	300	149	157	27	G1/8	8.5	12	Tr345*5	HNL69	16
AOH3068	320	162	171	28	G1/8	8.5	12	Tr365*5	HNL73	19.5
AOH3072	340	167	176	30	G1/8	8.5	12	Tr385*5	HNL77	21
AOH3076	360	170	180	31	G1/8	8.5	12	Tr410*5	HNL82	23.2
AOH3080	380	183	193	33	G1/8	8.5	12	Tr430*5	HNL86	27.3
AOH3084	400	186	196	34	G1/8	8.5	12	Tr450*5	HNL90	29
AOH3088	420	194	205	35	G1/8	8.5	12	Tr470*5	HNL94	32
AOH3092	440	202	213	37	G1/8	8.5	12	Tr490*5	HNL98	35.2
AOH3096	460	205	217	38	G1/8	8.5	12	Tr520*6	HNL104	39.2
AOH30/500	480	209	221	40	G1/8	8.5	12	Tr540*6	HNL108	42.5

⊙ Dimension L1 decreases as the Hydraulic withdrawal sleeve is driven in during mounting

⊙ M means metric thread. Tr means 30°, trapezoid thread and the digits are outside diameter of thread and pitch.