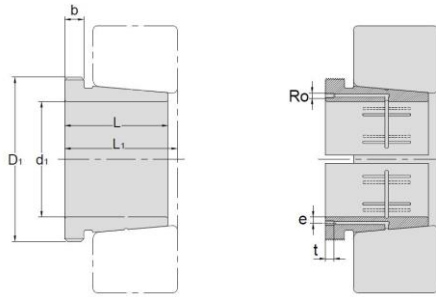


Hydraulic Withdrawal Sleeves



TAPER 1:12

AOH 31

Hydraulic Withdrawal Sleeves NO.	d1 mm	L mm	L ₁ ¹⁾ mm	b mm	Ro	e mm	t mm	Thread ²⁾ D1 mm	Appropriate Withdrawal Nut No.	Weight kg
AOH3132	150	103	108	16	M6	4.5	8	M180*3	AN36	3.21
AOH3134	160	104	109	16	M6	4.5	8	M190*3	AN38	3.4
AOH3136	170	116	122	19	M6	4.5	8	M200*3	AN40	4.22
AOH3138	180	125	131	20	M6	4.5	8	Tr210*4	HN42	4.89
AOH3140	190	134	140	21	M6	4.5	8	Tr220*4	HN44	5.49
AOH3144	200	145	151	23	G1/8	8.5	12	Tr240*4	HN48	10.4
AOH3148	220	154	161	25	G1/8	8.5	12	Tr260*4	HN52	12
AOH3152	240	172	179	26	G1/8	8.5	12	Tr290*4	HN58	16.2
AOH3156	260	175	183	28	G1/8	8.5	12	Tr310*4	HN62	17.5
AOH3160	280	192	200	30	G1/8	8.5	12	Tr330*5	HN66	20.8
AOH3164	300	209	217	31	G1/8	8.5	12	Tr350*5	HN70	24.5
AOH3168	320	225	234	33	G1/8	8.5	12	Tr370*5	HN74	29
AOH3172	340	229	238	35	G1/8	8.5	12	Tr400*5	HN80	33
AOH3176	360	232	242	36	G1/8	8.5	12	Tr420*5	HN84	35.7
AOH3180	380	240	250	38	G1/8	8.5	12	Tr440*5	HN88	39.5
AOH3184	400	266	276	40	G1/8	8.5	12	Tr460*5	HN92	46.5
AOH3188	420	270	281	42	G1/8	8.5	12	Tr480*5	HN96	49.8
AOH3192	440	285	296	43	G1/8	8.5	12	Tr510*6	HN102	57.9
AOH3196	460	295	307	45	G1/8	8.5	12	Tr530*6	HN106	63.1
AOH 31/500	480	313	325	47	G1/8	8.5	12	Tr550*6	HN110	70.9

© Dimension L1 decreases as the Hydraulic withdrawal sleeve is driven in during mounting

© M means metric thread. Tr means 30°, trapezoid thread and the digits are outside diameter of thread and pitch.