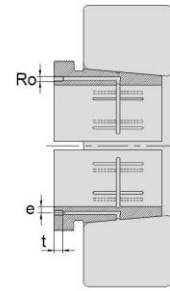
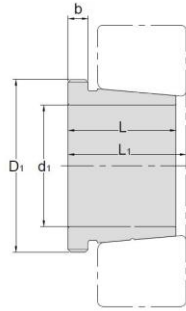


Hydraulic Withdrawal Sleeves



TAPER 1:12

AOH 32

Hydraulic Withdrawal Sleeves NO.	d1 mm	L mm	L ₁ ¹⁾ mm	b mm	Ro	e mm	t mm	Thread ²⁾ D1 mm	Appropriate Withdrawal Nut No.	Weight kg
AOH3232	150	124	130	20	M6	4.5	8	M180*3	AN36	4.08
AOH3234	160	134	140	24	M6	4.5	8	M190*3	AN38	4.8
AOH3236	170	140	146	24	M6	4.5	8	M200*3	AN40	5.32
AOH3238	180	145	152	25	M6	4.5	8	Tr210*4	HN42	5.9
AOH3240	190	153	160	25	M6	4.5	8	Tr220*4	HN44	6.68
AOH3260	280	228	236	34	G1/8	8.5	12	Tr330*5	HN66	26
AOH3264	300	246	254	36	G1/8	8.5	12	Tr350*5	HN70	30.6
AOH3268	320	264	273	38	G1/8	8.5	12	Tr370*5	HN74	35.8
AOH3272	340	274	283	40	G1/8	8.5	12	Tr400*5	HN80	41.6
AOH3276	360	284	294	42	G1/8	8.5	12	Tr420*5	HN84	46.3
AOH3280	380	302	312	44	G1/8	8.5	12	Tr440*5	HN88	52.5
AOH3284	400	321	331	46	G1/8	8.5	12	Tr460*5	HN92	59.7
AOH3288	420	330	341	48	G1/8	8.5	12	Tr480*5	HN96	64.8
AOH3292	440	349	360	50	G1/8	8.5	12	Tr510*6	HN102	75.2
AOH3296	460	364	376	52	G1/8	8.5	12	Tr530*6	HN106	83.1
AOH32/500	480	393	405	54	G1/8	8.5	12	Tr550*6	HN110	94.7

© Dimension L1 decreases as the Hydraulic withdrawal sleeve is driven in during mounting

© M means metric thread. Tr means 30°, trapezoid thread and the digits are outside diameter of thread and pitch.