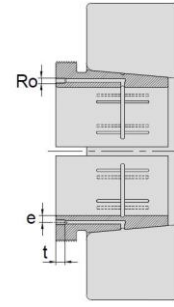
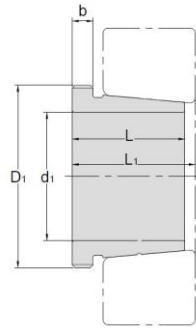


Hydraulic Withdrawal Sleeves



TAPER 1:12

AOH 39

Hydraulic Withdrawal Sleeves NO.	d1 mm	L mm	L ₁ ¹⁾ mm	b mm	Ro	e mm	t mm	Thread ²⁾ D1 mm	Appropriate Withdrawal Nut No.	Weight kg
AOH3944	200	77	83	16	M8	7.5	12	Tr230*4	HN46	4.83
AOH3948	220	77	83	16	M8	7.5	12	Tr250*4	HN50	5.29
AOH3952	240	94	100	18	M8	7.5	12	Tr270*4	HN54	7.06
AOH3956	260	94	100	18	M8	7.5	12	Tr290*4	HN58	7.07
AOH3960	280	112	119	21	M8	7.5	12	Tr310*5	HN62	10.1
AOH3964	300	112	119	21	M8	7.5	12	Tr330*5	HN66	10.8
AOH3968	320	112	119	21	M8	7.5	12	Tr360*5	HNL72	12.4
AOH3972	340	112	119	21	M8	7.5	12	Tr380*5	HNL76	13.1
AOH3976	360	130	138	22	M8	7.5	12	Tr400*5	HNL80	15.9
AOH3980	380	130	138	22	M8	7.5	12	Tr420*5	HNL84	17.2
AOH3984	400	130	138	22	M8	7.5	12	Tr440*5	HNL88	18.1
AOH3988	420	145	153	25	G1/8	8.5	12	Tr460*5	HNL92	21.5
AOH3992	440	145	153	25	G1/8	8.5	12	Tr480*5	HNL96	22.5
AOH3996	460	158	167	28	G1/8	8.5	12	Tr500*5	HNL100	26
AOH39/500	480	162	172	32	G1/8	8.5	12	Tr520*6	HNL104	27.7

© Dimension L1 decreases as the Hydraulic withdrawal sleeve is driven in during mounting

© M means metric thread. Tr means 30°, trapezoid thread and the digits are outside diameter of thread and pitch.