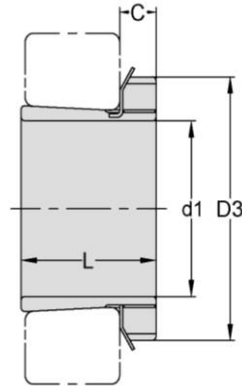


Adapter Sleeves

H 2
HE 2
HS 2
HA 2



TAPER 1:12

Adapter Sleeve NO.	d1				L mm	D3 mm	C mm	Lock Nut	Lock Washer	Weight kg
	H mm	HE in	HS in	HA in						
H204	17	-	-	-	24	32	7	AN04	AW04	0.041
H205	20	3/4	7/8	13/16	26	38	8	AN05	AW05	0.07
H206	25	1	7/8	15/16	27	45	8	AN06	AW06	0.099
H207	30	1 1/4	1 1/8	1 3/16	29	52	9	AN07	AW07	0.125
H208	35	1 1/4	1 3/8	1 5/16	31	58	10	AN08	AW08	0.174
H209	40	1 1/2	1 5/8	1 7/16	33	65	11	AN09	AW09	0.227
H210	45	1 3/4	1 5/8	1 11/16	35	70	12	AN10	AW10	0.274
H211	50	2	1 7/8	1 15/16	37	75	12	AN11	AW11	0.308
H212	55	2 1/4	2 1/8	2 1/16	38	80	13	AN12	AW12	0.346
H213	60	2 1/4	2 3/8	2 3/16	40	85	14	AN13	AW13	0.401
H214	60	2 1/4	-	2 5/16	41	92	14	AN14	AW14	0.593
H215	65	2 1/2	2 5/8	2 7/16	43	98	15	AN15	AW15	0.707
H216	70	2 3/4	2 7/8	2 11/16	46	105	17	AN16	AW16	0.882
H217	75	3	-	2 15/16	50	110	18	AN17	AW17	1.02
H218	80	3 1/4	3 1/8	3 3/16	52	120	18	AN18	AW18	1.19
H219	85	3 1/4	-	3 5/16	55	125	19	AN19	AW19	1.37
H220	90	3 1/2	-	3 7/16	58	130	20	AN20	AW20	1.49
H221	95	-	-	-	60	140	20	AN21	AW21	1.72
H222	100	4	-	3 15/16	63	145	21	AN22	AW22	1.93

CS adapter sleeves are supplied completely with lock nuts and lock washers.

Adapter for these bores are designated HE/HS/HA.