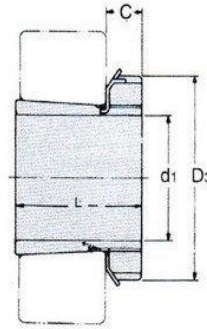


Adapter Sleeves



H 23
HE 23
HS 23
HA 23

TAPER 1:12

Adapter Sleeve NO.	d1				L mm	D ₃ mm	C mm	Lock Nut	Lock Washer	Weight kg
	H mm	HE in	HS in	HA in						
H2304	17	-	-	-	31	32	7	AN04	AW04	0.049
H2305	20	3/4	7/8	13/16	35	38	8	AN05	AW05	0.087
H2306	25	1	7/8	15/16	38	45	8	AN06	AW06	0.126
H2307	30	1 1/4	1 1/8	1 3/16	43	52	9	AN07	AW07	0.165
H2308	35	1 1/4	1 3/8	1 5/16	46	58	10	AN08	AW08	0.224
H2309	40	1 1/2	1 5/8	1 7/16	50	65	11	AN09	AW09	0.28
H2310	45	1 3/4	1 5/8	1 11/16	55	70	12	AN10	AW10	0.362
H2311	50	2	1 7/8	1 15/16	59	75	12	AN11	AW11	0.42
H2312	55	2 1/4	2 1/8	2 1/16	62	80	13	AN12	AW12	0.481
H2313	60	2 1/4	2 3/8	2 3/16	65	85	14	AN13	AW13	0.557
H2314	60	2 1/4	-	-	68	92	14	AN14	AW14	0.897
H2315	65	2 1/2	2 5/8	2 7/16	73	98	15	AN15	AW15	1.05
H2316	70	2 3/4	2 7/8	2 11/16	78	105	17	AN16	AW16	1.28
H2317	75	3	-	2 15/16	82	110	18	AN17	AW17	1.45
H2318	80	3 1/4	3 1/8	3 3/16	86	120	18	AN18	AW18	1.69
H2319	85	3 1/4	-	3 5/16	90	125	19	AN19	AW19	1.92
H2320	90	3 1/2	-	3 7/16	97	130	20	AN20	AW20	2.15
H2321	95	-	-	-	101	140	20	AN21	AW21	2.46
H2322	100	4	-	3 15/16	105	145	21	AN22	AW22	2.74
H2324	110	4 1/4	-	4 3/16	112	155	22	AN24	AW24	3.19
H2326	115	4 1/2	-	4 7/16	121	165	23	AN26	AW26	4.6
H2328	125	5	4 13/16	4 15/16	131	180	24	AN28	AW28	5.55
H2330	135	5 1/4	-	5 3/16	139	195	26	AN30	AW30	6.63
H2332	140	5 1/2	-	5 7/16	147	210	28	AN32	AW32	9.14
H2334	150	6	-	5 15/16	154	220	29	AN34	AW34	10.2
H2336	160	6 1/2	-	6 7/16	161	230	30	AN36	AW36	11.3
H2338	170	6 3/4	-	6 15/16	169	240	31	AN38	AW38	12.6
H2340	180	7	-	7 3/16	176	250	32	AN40	AW40	13.9
H2344	200	8	7 7/8	7 15/16	183	280	32	AN44	AL44	16.7
H2348	220	8 1/2	-	8 15/16	196	300	34	AN48	AL48	19.7
H2352	240	9 1/2	-	9 7/16	208	330	36	AN52	AL52	24.2
H2356	260	10 1/2	-	9 15/16	221	350	38	AN56	AL56	27.8

CS adapter sleeves are supplied completely with lock nuts and lock washers or plates.
Adapter for these bores are designated HE/HS/HA.