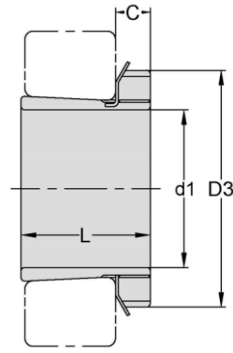


Adapter Sleeves

H 3
HE 3
HS 3
HA 3



TAPER 1:12

Adapter Sleeve NO.	d1				L mm	D3 mm	C mm	Lock Nut	Lock Washer	Weight kg
	H mm	HE in	HS in	HA in						
H304	17	-	-	-	28	32	7	AN04	AW04	0.045
H305	20	3/4	7/8	-	29	38	8	AN05	AW05	0.075
H306	25	1	7/8	15/16	31	45	8	AN06	AW06	0.109
H307	30	1 1/4	1 1/8	1 3/16	35	52	9	AN07	AW07	0.142
H308	35	1 1/4	1 3/8	1 5/16	36	58	10	AN08	AW08	0.189
H309	40	1 1/2	1 5/8	1 7/16	39	65	11	AN09	AW09	0.248
H310	45	1 3/4	1 5/8	1 11/16	42	70	12	AN10	AW10	0.303
H311	50	2	1 7/8	1 15/16	45	75	12	AN11	AW11	0.345
H312	55	2 1/4	2 1/8	2 1/16	47	80	13	AN12	AW12	0.394
H313	60	2 1/4	2 3/8	2 3/16	50	85	14	AN13	AW13	0.458
H314	60	2 1/4	-	-	52	92	14	AN14	AW14	0.723
H315	65	2 1/2	2 5/8	2 7/16	55	98	15	AN15	AW15	0.831
H316	70	2 3/4	2 7/8	2 11/16	59	105	17	AN16	AW16	1.03
H317	75	3	-	2 15/16	63	110	18	AN17	AW17	1.18
H318	80	3 1/4	3 1/8	3 3/16	65	120	18	AN18	AW18	1.37
H319	85	3 1/4	-	3 5/16	68	125	19	AN19	AW19	1.56
H320	90	3 1/2	-	3 7/16	71	130	20	AN20	AW20	1.69
H321	95	-	-	-	74	140	20	AN21	AW21	1.95
H322	100	4	-	3 15/16	77	145	21	AN22	AW22	2.18

CS adapter sleeves are supplied completely with lock nuts and lock washers.

Adapter for these bores are designated HE/HS/HA