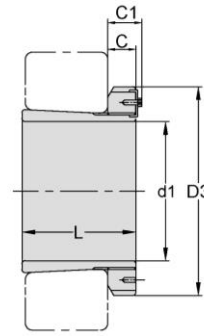
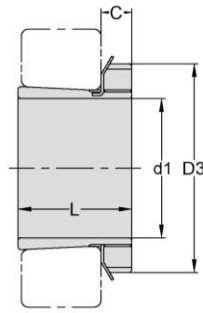


Adapter Sleeves

H 30
HE 30
HA 30



TAPER 1:12

Adapter Sleeve NO.	d1			L	D3	C	C ₁ ⁴⁾	Lock Nut	Lock Washer and Lock plate	Weight
	H mm	HE in	HA in							
H3024	110	4 1/4	4 3/16	72	145	22	-	ANL24	AWL24	1.93
H3026	115	4 1/2	4 7/16	80	155	23	-	ANL26	AWL26	2.85
H3028	125	5	4 15/16	82	165	24	-	ANL28	AWL28	3.16
H3030	135	5 1/4	5 3/16	87	180	26	-	ANL30	AWL30	3.89
H3032	140	5 1/2	5 7/16	93	190	28	-	ANL32	AWL32	5.21
H3034	150	6	5 15/16	101	200	29	-	ANL34	AWL34	5.99
H3036	160	6 1/2	6 7/16	109	210	30	-	ANL36	AWL36	6.83
H3038	170	6 3/4	6 15/16	112	220	31	-	ANL38	AWL38	7.45
H3040	180	7	7 3/16	120	240	32	-	ANL40	AWL40	9.19
H3044	200	8	7 15/16	128	260	30	41	ANL44	ALL44	10.3
H3048	220		8 15/16	133	290	34	46	ANL48	ALL48	13.2
H3052	240	9 1/2	9 7/16	147	310	34	46	ANL52	ALL52	15.3
H3056	260	10 1/2	10 7/16	152	330	38	50	ANL56	ALL56	17.7
H3060	280	-	10 15/16	168	360	42	54	ANL60	ALL60	22.8
H3064	300	12	11 15/16	171	380	42	55	ANL64	ALL64	24.6
H3068	320	12 1/2	12 7/16	187	400	45	58	ANL68	ALL68	28.7
H3072	340	-	13 7/16	188	420	45	58	ANL72	ALL72	30.5
H3076	360	-	13 15/16	193	450	48	62	ANL76	ALL76	35.8
H3080	380	-	-	210	470	52	66	ANL80	ALL80	41.3
H3084	400	-	-	212	490	52	66	ANL84	ALL84	43.7
H3088	410	-	-	228	520	60	77	ANL88	ALL88	65.2
H3092	430	-	-	234	540	60	77	ANL92	ALL92	69.5
H3096	450	-	-	237	560	60	77	ANL96	ALL96	73.3
H30/500	470	-	-	247	580	68	85	ANL100	ALL100	81.8

CS adapter sleeves are supplied completely with lock nuts and lock washers or lock plates.

Adapter for these bores are designated HE/HA.

Adapter with the dimension C1 is equipped with a locking device as shown in the right illustration.