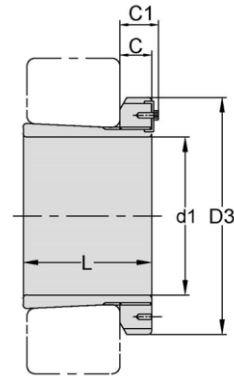
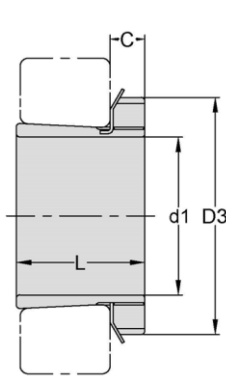


Adapter Sleeves

H 31
HE 31
HA 31



TAPER 1:12

Adapter Sleeve NO.	d1			L mm	D3 mm	C mm	C ₁ ⁴⁾ mm	Lock Nut	Lock Washer & Lock Plate	Weight kg
	H mm	HE in	HA in							
H3120	90	3 1/2	3 7/16	76	130	20	-	AN20	AW20	1.8
H3122	100	4	3 15/16	81	145	21	-	AN22	AW22	2.25
H3124	110	4 1/4	4 3/16	88	155	22	-	AN24	AW24	2.64
H3126	115	4 1/2	4 7/16	92	165	23	-	AN26	AW26	3.66
H3128	125	5	4 15/16	97	180	24	-	AN28	AW28	4.34
H3130	135	5 1/4	5 3/16	111	195	26	-	AN30	AW30	5.52
H3132	140	5 1/2	5 7/16	119	210	28	-	AN32	AW32	7.67
H3134	150	6	5 15/16	122	220	29	-	AN34	AW34	8.38
H3136	160	6 1/2	6 7/16	131	230	30	-	AN36	AW36	9.5
H3138	170	6 3/4	6 15/16	141	240	31	-	AN38	AW38	10.8
H3140	180	7	7 3/16	150	250	32	-	AN40	AW40	12.1
H3144	200	8	7 15/16	158	280	32	44	AN44	AL44	14.7
H3148	220	8 1/2	-	169	300	34	46	AN48	AL48	17.3
H3152	240	9 1/2	-	187	330	36	49	AN52	AL52	22
H3156	260	10 1/2	-	192	350	38	51	AN56	AL56	24.5
H3160	280	-	-	208	380	40	53	AN60	AL60	30.2
H3164	300	12	-	226	400	42	56	AN64	AL64	34.9
H3168	320	12 1/2	-	254	440	55	72	AN68	AL68	49.5
H3172	340	-	-	259	460	58	75	AN72	AL72	54.2
H3176	360	-	-	264	490	60	77	AN76	AL76	61.7
H3180	380	-	-	272	520	62	82	AN80	AL80	70.6
H3184	400	-	-	304	540	70	90	AN84	AL84	84.2
H3188	410	-	-	307	560	70	90	AN88	AL88	104
H3192	430	-	-	326	580	75	95	AN92	AL92	116
H3196	450	-	-	335	620	75	95	AN96	AL96	133
H31/500	470	-	-	356	630	80	100	AN100	AL100	143

CS adapter sleeves are supplied completely with lock nuts and lock washers or lock plates.

Adapter for these bores are designated HE/HA

Adapter with the dimension C1 is equipped with a locking device as shown in the right illustration.