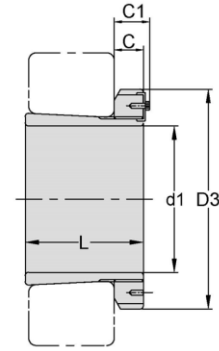
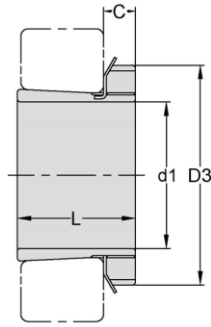


Adapter Sleeves



TAPER 1:12

H 32

Adapter Sleeve NO.	d1 mm	L mm	D3 mm	C mm	C ₁ ²⁾ mm	Lock Nut	Lock Plate	Weight kg
H3260	280	240	380	40	53	AN60	AL60	34.1
H3264	300	258	400	42	56	AN64	AL64	39.3
H3268	320	288	440	55	72	AN68	AL68	54.6
H3272	340	299	460	58	75	AN72	AL72	60.2
H3276	360	310	490	60	77	AN76	AL76	69.6
H3280	380	328	520	62	82	AN80	AL80	81
H3284	400	352	540	70	90	AN84	AL84	94
H3288	410	361	560	70	90	AN88	AL88	118
H3292	430	382	580	75	95	AN92	AL92	132
H3296	450	397	620	75	95	AN96	AL96	152
H32/500	470	428	630	80	100	AN100	AL100	166

CS adapter sleeves are supplied completely with lock nuts and lock plates.

Adapter with the dimension C1 is equipped with a locking device as shown in the right illustration.