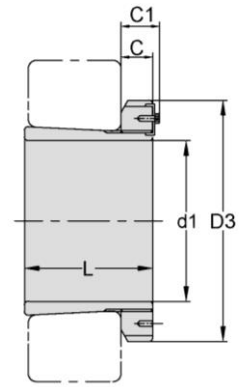
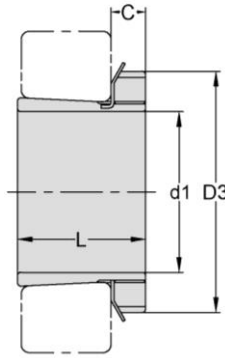


## Adapter Sleeves



H 39

TAPER 1:12

Adapter Sleeve NO.	d1 mm	L mm	D3 mm	C mm	C <sub>1</sub> <sup>2)</sup> mm	Lock Nut	Lock Washer & Lock Plate	Weight kg
H3936	160	87	210	29.5	-	ANL36	AWL36	5.7
H3938	170	89	220	30.5	-	ANL38	AWL38	6.19
H3940	180	98	240	31.5	-	ANL40	AWL40	7.89
H3944	200	96	260	30	41	ANL44	ALL44	8.16
H3948	220	101	290	34	46	ANL48	ALL48	10.7
H3952	240	116	310	34	46	ANL52	ALL52	12.8
H3956	260	121	330	38	50	ANL56	ALL56	14.8
H3960	280	140	360	42	54	ANL60	ALL60	19.8
H3964	300	140	380	42	55	ANL64	ALL64	21
H3968	320	144	400	45	58	ANL64	ALL68	23.5
H3972	340	144	420	45	58	ANL72	ALL72	24.5
H3976	360	164	450	48	62	ANL76	ALL76	31.5
H3980	380	168	470	52	66	ANL80	ALL80	35
H3984	400	168	490	52	66	ANL84	ALL84	36.6
H3988	410	189	520	60	77	ANL88	ALL88	57.3
H3992	430	189	540	60	77	ANL92	ALL92	59.9
H3996	450	200	560	60	77	ANL96	ALL96	64.9
H39/500	470	208	580	68	85	ANL100	ALL100	73.1

CS adapter sleeves are supplied completely with lock nuts and lock washers or lock plates.

Adapter with the dimension C1 is equipped with a locking device as shown in the right illustration.