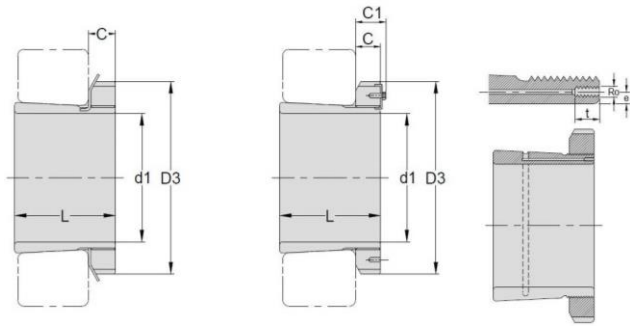


## Hydraulic Adapter Sleeves



TAPER 1:12

### HOH 39

Hydraulic Adapter Sleeve NO.	d1 H mm	L mm	D3 mm	C mm	C <sub>1</sub> <sup>2)</sup> mm	Ro	e mm	t mm	Lock Nut	Lock Washer & Lock Plate	Weight kg
HOH3936	160	87	210	30	-	M6	4.2	8	ANL36	AWL36	5.7
HOH3938	170	89	220	31	-	M6	4.2	8	ANL38	AWL38	6.19
HOH3940	180	98	240	32	-	M6	4.2	8	ANL40	AWL40	7.89
HOH3944	200	96	260	30	41	M6	4.2	8	ANL44	ALL44	8.16
HOH3948	220	101	290	34	46	M6	4.2	8	ANL48	ALL48	10.7
HOH3952	240	116	310	34	46	M6	4.2	8	ANL52	ALL52	12.8
HOH3956	260	121	330	38	50	M6	4.2	8	ANL56	ALL56	14.8
HOH3960	280	140	360	42	54	M6	4.2	8	ANL60	ALL60	19.8
HOH3964	300	140	380	42	55	M6	3.5	8	ANL64	ALL64	21
HOH3968	320	144	400	45	58	M6	3.5	8	ANL68	ALL68	23.5
HOH3972	340	144	420	45	58	M6	3.5	8	ANL72	ALL72	24.5
HOH3976	360	164	450	48	62	M6	3.5	8	ANL76	ALL76	31.5
HOH3980	380	168	470	52	66	M6	3.5	8	ANL80	ALL80	35
HOH3984	400	168	490	52	66	M6	3.5	8	ANL84	ALL84	36.6
HOH3988	410	189	520	60	77	M8	6.5	12	ANL88	ALL88	57.3
HOH3992	430	189	540	60	77	M8	6.5	12	ANL92	ALL92	59.9
HOH3996	450	200	560	60	77	M8	6.5	12	ANL96	ALL96	64.9
HOH39/500	470	208	580	68	85	M8	6.5	12	ANL100	ALL100	73.1

CS Hydraulic adapter sleeves are supplied completely with lock nuts and lock washers or lock plates.